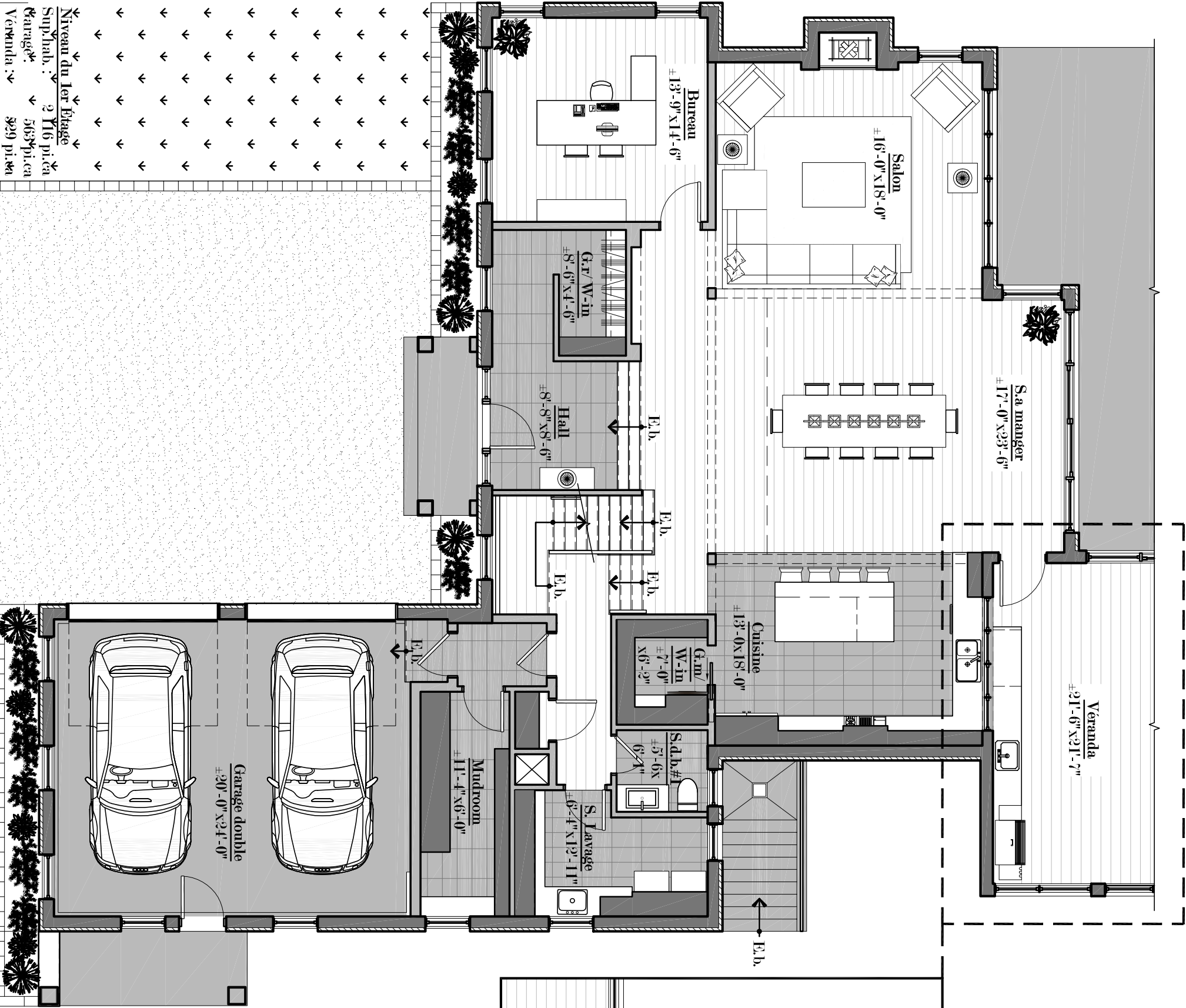
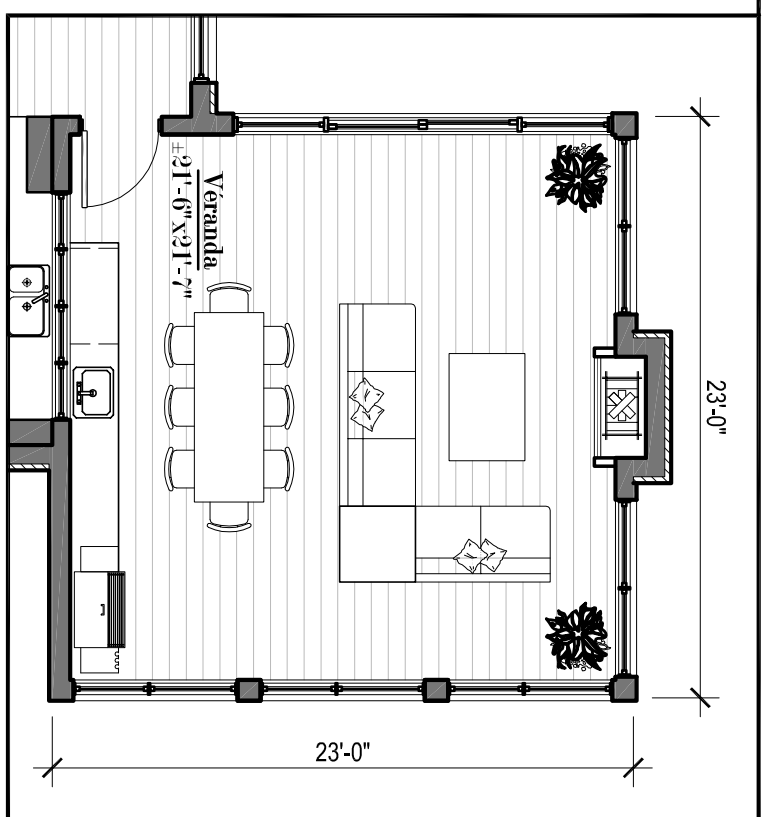


70'-0"



Niveau du 1er étage
 Supplab. : 2 Y16 pica
 Garage : 563 pica
 Veranda : 829 pica

62'-6"

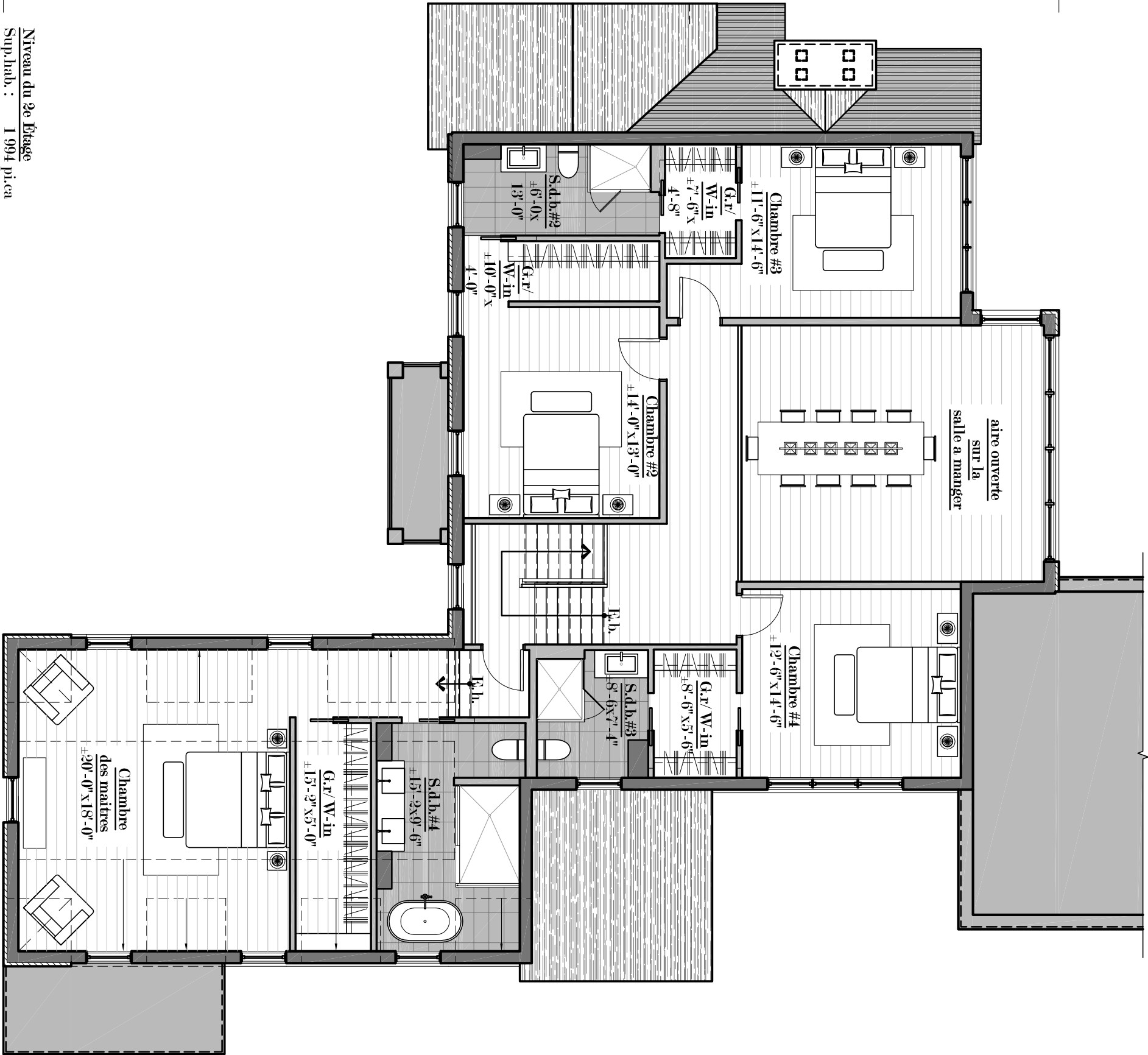


23'-0"

23'-0"

Veranda
±21'-6" x 21'-7"

70'-0"



Niveau du 2e Etage
Sup. hab. : 1 994 pi.ca

55'-2"